



Thermo Scientific
GRAMS Suite

Version 9.2

Welcome Guide

Thermo
SCIENTIFIC

© 2014 Thermo Fisher Scientific Inc. All rights reserved.

Thermo Fisher Scientific Inc. provides this document to its customers with a product purchase to use in the product operation. This document is copyright protected and any reproduction of the whole or any part of this document is strictly prohibited, except with the written authorization of Thermo Fisher Scientific Inc.

The contents of this document are subject to change without notice. All technical information in this document is for reference purposes only. System configurations and specifications in this document supersede all previous information received by the purchaser.

Thermo Fisher Scientific Inc. makes no representations that this document is complete, accurate or error-free and assumes no responsibility and will not be liable for any errors, omissions, damage or loss that might result from any use of this document, even if the information in the document is followed properly.

This document is not part of any sales contract between Thermo Fisher Scientific Inc. and a purchaser. This document shall in no way govern or modify any Terms and Conditions of Sale, which Terms and Conditions of Sale shall govern all conflicting information between the two documents.

Contents

Welcome to GRAMS Suite 9.2	1
Component Applications	1
Validation	2
Shipping Content	2
Installation	2
Comments	2
System Requirements	4
Hardware	4
Software	4
Contents of the Installation Kit	5
Installation Instructions	6
Installing the GRAMS Suite	6

Welcome to GRAMS Suite 9.2

It is with great pleasure that Thermo Fisher Scientific encloses your copy of Thermo Scientific™ GRAMS Suite™ 9.2.

The GRAMS Suite of spectroscopy software is the industry standard solution for visualizing, processing, reporting, and managing spectroscopy data. The GRAMS Suite contains a collection of complementary and fully integrated applications and modules centered on the core GRAMS/AI spectroscopy data processing and reporting software. The GRAMS Suite advanced processing routines, data comparison and visualization features, and ability to handle data from almost any analytical instrument set the industry standard for spectroscopy software.

Detailed information on this release is included in the GRAMS Suite 9.2 Release Notes, delivered with the application. Please refer to that document for information on the latest enhancements to the software.

Component Applications

The GRAMS Suite 9.2 consists of the following applications:

- GRAMS/AI 9.2
- GRAMS 3D 9.2
- Spectral ID 9.2
- Spectral DB 9.2
- GRAMS Convert 9.2
- GRAMS IQ 9.2
- Active Multifile Tool 9.2
- Excel Exchange 9.2
- IQ Predict 9.2
- QuickQuant 9.2

All of these applications are installed by the GRAMS Suite setup executable.

Validation

This release was developed in line with Thermo Scientific's Quality Management System and, as part of the development process, was tested on the following operating systems:

- Windows 8.1 64-bit
- Windows 7 32-bit and 64-bit
- Windows XP SP3
- Windows 2008 Server

Shipping Content

GRAMS Suite 9.2 is shipped on request to supported customers. The kit includes the latest GRAMS Suite software, accompanying tools, and product release notes in PDF format.

GRAMS Suite 9.2 can also be installed from the following download site:

<http://www.gramssuite.com/downloads>

Installation

Comprehensive installation instructions appear in this Welcome Guide. We recommend that you read the instructions carefully prior to installation.

Comments

Thank you for choosing Thermo Scientific GRAMS Suite.

The aim of Thermo Fisher Scientific is to deliver consistently high-quality software solutions to meet your laboratory requirements. Consequently, we are very interested in any suggestions you wish to make.

Please contact us directly using the following email address:

support.informatics@thermofisher.com

Alternately, you can find a full list of contacts on our Support website:

<http://support.thermoinformatics.com/contacts>

Regards,

David Joyce
Senior Product Manager
Informatics

System Requirements

This section contains details of the hardware and software requirements for the GRAMS Suite.

Hardware

The following table provides the minimum hardware requirements for the GRAMS Suite:

Hardware	Required	
Processor	1 GHz	
RAM	1 GB	
Hard Disk Space	GRAMS Suite	120 MB
	Microsoft .NET Framework 4.0	1 GB
Display Resolution	1024 x 768	

Software

The GRAMS Suite runs on the following operating systems:

- Windows 8.1 64-bit
- Windows 7 (32-bit and 64-bit)
- Windows Vista Professional
- Windows XP Professional SP3

Each operating system requires Microsoft .NET Framework 4.0 and Microsoft Visual C++ Redistributable Package. If these programs are not installed on your system, the GRAMS Suite's InstallShield wizard will install it for you.

Contents of the Installation Kit

The GRAMS Suite installation kit contains the following items:

- **GRAMS Suite setup executable**

To install the GRAMS Suite and the GRAMS Converters package, run GRAMSSuiteSetup.exe.

- **GRAMS 9.2 Product Release Notes**

The release notes for this release are in PDF format and include details of new functionality, corrected issues, etc.

- **README file**

A text file detailing any late updates and instructions for this release.

Installation Instructions

This section contains instructions for:

- Installing the GRAMS Suite, including the GRAMS Converters Package and GRAMS Shell Extension Handlers.
- Licensing the GRAMS Suite.

Before installation, we strongly recommend that you close all programs to make sure that files update properly, and verify that you have administrator permissions on the target PC.

The installer runs three separate installs in the following order:

1. GRAMS Converters
2. GRAMS Shell Extension Handlers
3. GRAMS Suite

Installing the GRAMS Suite

To start the installation of the GRAMS Suite

1. Locate and run the GRAMSSuiteSetup.exe setup executable.
If you downloaded the file, a security warning dialog box may appear. The warning is a Microsoft feature designed to protect users from downloading files from unknown websites. The GRAMS Suite software download has the digital signature of its publisher, Thermo Fisher Scientific.
2. Click **Run** (or similar) on any security warning dialog boxes that appear.
3. The Self-Extractor opens:
 - Click **Setup** to start the installation.
 - Click **Cancel** to stop the installation with no changes to your system.

- Click **About** to see the versions of the software packages.

Note When Setup finds a previous version of GRAMS Converters or the GRAMS Suite, a message informs you that these previous versions will be updated. Click **OK** to uninstall the previous versions and continue with the installation.

4. The GRAMS Converters Package InstallShield wizard appears:

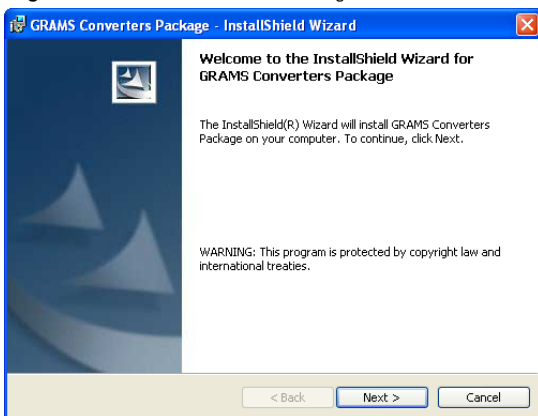
- a. **Preparing to Install**

A progress bar appears while the package prepares for installation.

Note Setup looks on your system for Microsoft .NET Framework 4.0 and Microsoft Visual C++ Redistributable Package and prompts for installation when these programs are not installed. Click **Install** to install the programs that appear in the prompt.

When the wizard is ready to start the GRAMS Converters Package installation, the Welcome Screen appears.

Figure 1. GRAMS Converters Package InstallShield wizard



- b. **Welcome**

Click **Next** to continue.

c. **License Agreement**

Read and accept the terms of the license agreement, and then click **Next** to continue.

Note Click **Print** to print the license agreement.

d. **Ready to Install the Program**

At this point, the InstallShield wizard has all the information it requires for your installation.

Click **Install** to complete the installation, or **Back** if you need to make any changes to your selections.

Note A User Account Control dialog may appear, requesting permission to continue with the installation. Click **Continue**.

e. **Installing GRAMS Converters Package**

This screen contains a progress bar that indicates the progress of the GRAMS Converters Package installation.

When all files are copied to your system, the Installation Wizard Completed screen appears.

f. **Installation Wizard Completed**

Click **Finish** to close the InstallShield wizard and complete the installation.

5. The GRAMS Shell Extension Handlers InstallShield wizard appears:

a. **Preparing to Install**

A progress bar appears while the package prepares for installation.

When the wizard is ready to start the GRAMS Shell Extension Handlers installation, the Welcome Screen appears.

Figure 2. GRAMS Shell Extension Handlers InstallShield wizard



b. Welcome

Click **Next** to continue.

c. License Agreement

Read and accept the terms of the license agreement, and then click **Next** to continue.

Note Click **Print** to print the license agreement.

d. Installing GRAMS Shell Extension Handlers

This screen contains a progress bar that indicates the progress of the GRAMS Shell Extension Handlers installation.

When all files are copied to your system, the Installation Wizard Completed screen appears.

e. Installation Wizard Completed

Click **Finish** to close the InstallShield wizard and complete the installation.

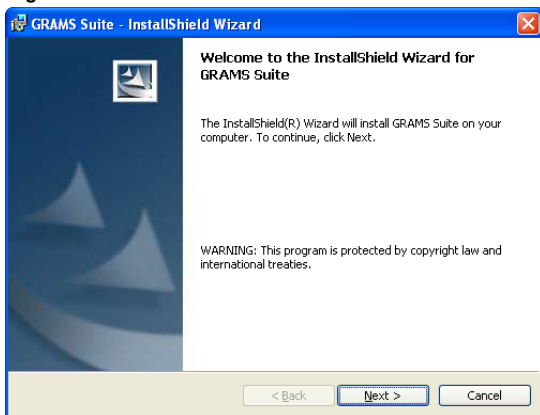
6. The GRAMS Suite InstallShield wizard appears:

a. Preparing to Install

A progress bar appears while the package prepares for installation.

When the wizard is ready to start the GRAMS Suite installation, the Welcome Screen appears.

Figure 3. GRAMS Suite InstallShield wizard



b. Welcome

Click **Next** to continue.

c. License Agreement

Read and accept the terms of the license agreement, and then click **Next** to continue.

Note Click **Print** to print the license agreement.

d. Destination Folder

You can use the default installation location, or click **Change** to designate a different location for the GRAMS Suite installation. Click **Next** to continue.

Note The GRAMS Suite documentation refers to the default installation location. If you choose a different location, please make a note of its path for future reference.

e. GRAMS Suite Data Destination Folder

The destination folder specifies the path used by the GRAMS Suite to save all information that can be modified during the operation of the applications.

You can use the default folder location, or click **Change** to designate a different destination folder location. Click **Next** to continue.

IMPORTANT It is critical that the selected destination folder has write access for all GRAMS Suite users. Be sure to record the path that you select. It is helpful to place the GRAMSSuiteData folder in a short, easy-to-remember path.

f. Ready to Install the Program

At this point, the InstallShield wizard has all the information it requires for your installation.

Click **Install** to complete the installation, or **Back** if you need to make any changes to your selections.

Note A User Account Control dialog box may appear, requesting permission to continue with the installation. Click **Continue**.

g. Installing GRAMS Suite

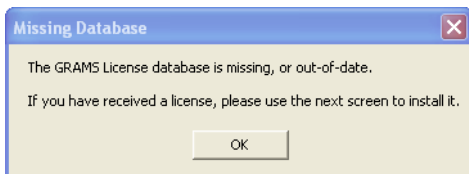
This screen contains a progress bar that indicates the progress of the GRAMS Suite installation.

The GRAMS Configuration Manager appears when all files are copied to your system.

Note After you set up a license using the GRAMS Configuration Manager, the installer returns you to the GRAMS Suite InstallShield Wizard.

7. If this is a new installation, the GRAMS Configuration Manager displays the following message:

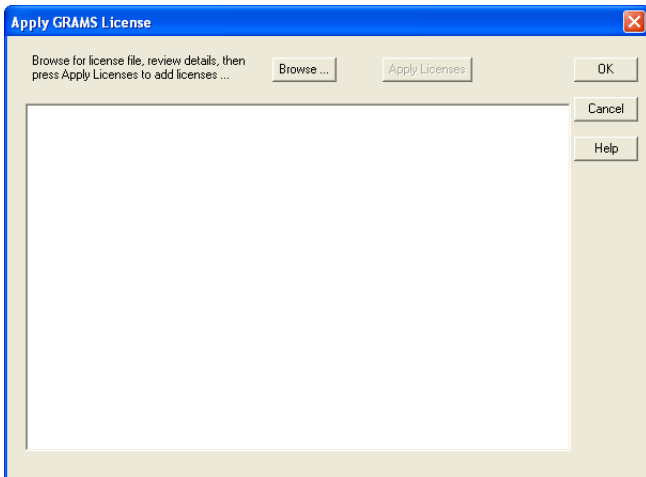
Figure 4. Missing Database message



Click **OK** to continue.

The Apply GRAMS License window appears.

Figure 5. Apply GRAMS License window



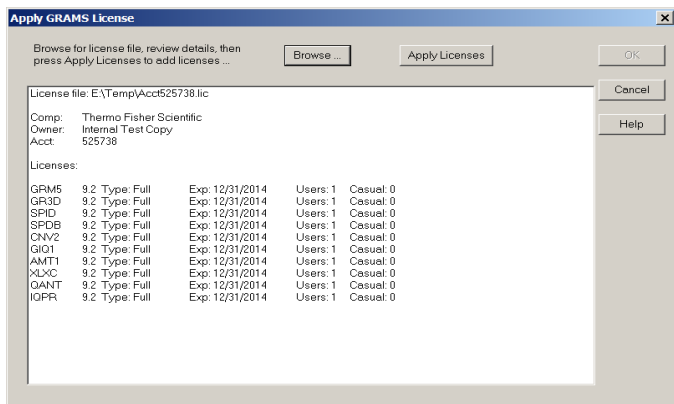
8. Click **Browse** and select the GRAMS Suite license file.

If you purchased the software, the license file is delivered as an email attachment. If you registered for a trial version, use the downloaded license file. In either case, your license file will have an extension of .lic.

IMPORTANT It is a violation of the GRAMS Suite License Policy to apply a license file to more than one machine. If you need to have any of the GRAMS Suite applications installed on additional machines, please email the Sales department at sales@gramssuite.com.

After selecting the license file, the Apply GRAMS License window displays information about the license:

Figure 6. Apply GRAMS License window – License Information



9. Check the license information to make sure that it is correct, and then click **Apply License** to license the relevant products.

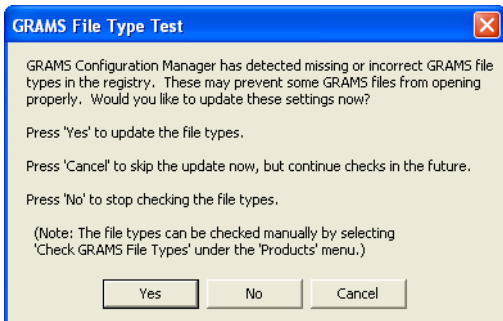
The Apply GRAMS License window is updated to show the licenses being applied. If there were any errors, they will be displayed.

10. Click **OK** to close the Apply GRAMS License window.
11. The GRAMS Configuration Manager now checks the registry to verify that the GRAMS Suite file types are properly registered.

If it finds any extensions that are incorrectly identified, the following steps will occur:

- a. The GRAMS File Type Test dialog appears.

Figure 7. GRAMS File Type Test dialog



- b. Click **Yes** to register the file types.

Note A User Account Control dialog box may appear, requesting permission for the GRAMSAdmin.exe application to access your computer. Click **Allow**.

A confirmation message appears when file type registration completes.

- c. Click **OK** to close the message.
12. From the GRAMS Configuration Manager File menu, choose **Exit** to close the application and return to the GRAMS Suite InstallShield wizard.

The Installation Wizard Completed screen appears.

13. Click **Finish** to close the InstallShield wizard and complete the installation.